

# How to engage stakeholders in climate adaptive initiatives

WRC conference Middelburg  
6 November 2018

Yill Voglezang-Havers



## URBAN GREEN-BLUE GRIDS - SPONGE TOOLBOX

An aerial 3D architectural rendering of a city neighborhood. The scene shows a mix of modern and traditional buildings, interspersed with green spaces, trees, and blue water features like a winding canal or river. A prominent pink line, possibly representing a path or a specific infrastructure element, runs through the center of the city. The overall impression is of a planned, sustainable urban environment.

How can we work together on  
climate proof cities?

Yill Vogelezang-Havers, Projectmanager  
SPONGE2020

Interreg   
2 Seas Mers Zeeën  
SPONGE 2020  
European Regional Development Fund



# URBAN GREEN-BLUE GRIDS - SPONGE TOOLBOX

WHY

WHAT

HOW

Perspective of the Sponge Toolbox

Interreg   
2 Seas Mers Zeeën  
SPONGE 2020  
European Regional Development Fund



# URBAN GREEN-BLUE GRIDS - SPONGE TOOLBOX



Part 1: Tools for enabling



## Incentives to contribute to flood adaptation in cities

Stakeholder analyses in Belgium, the UK and the Netherlands

Kathrin Sonja, Marijke Dijkshoorn-Dekker, Nico Polman

IF WE MAKE PUBLIC SPACE 100% CLIMATE PROOF

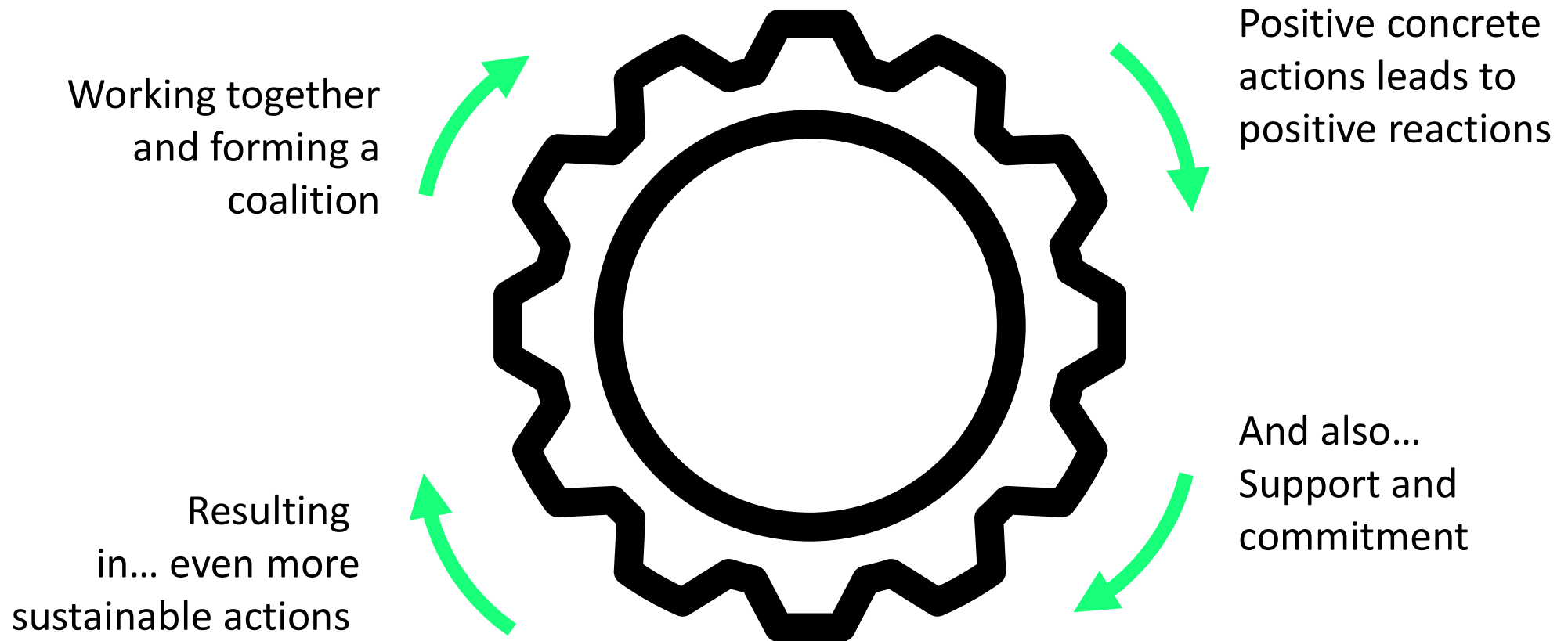
THE TOTAL CITY IS ONLY 50% CLIMATE PROOF

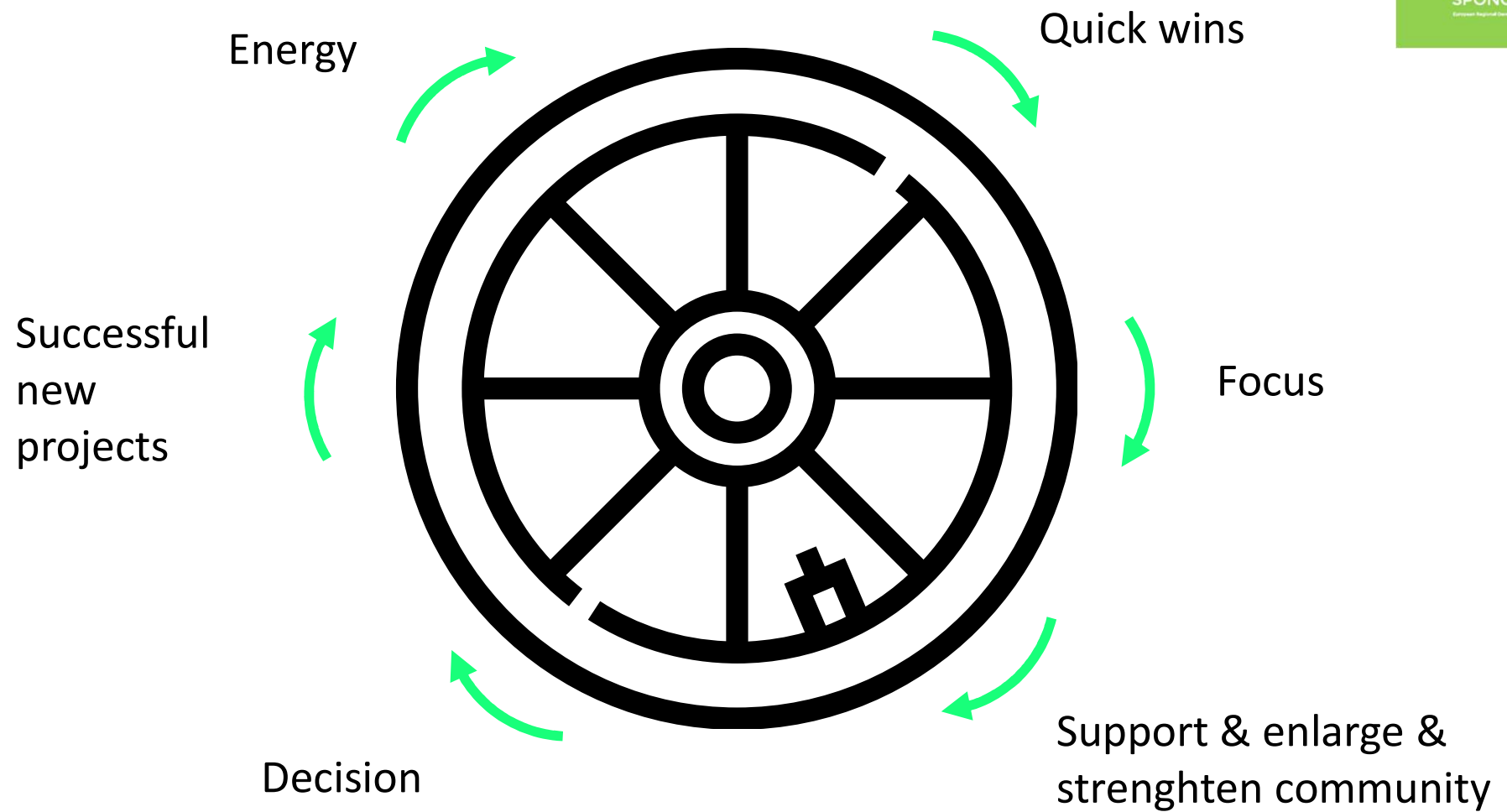
WE NEED OTHER STAKEHOLDERS (RESIDENTS- BUSINESSES) TO  
REACH OUR GOAL

THEREFORE.....

WE NEED SOCIAL ENGAGEMENT STRATEGIES

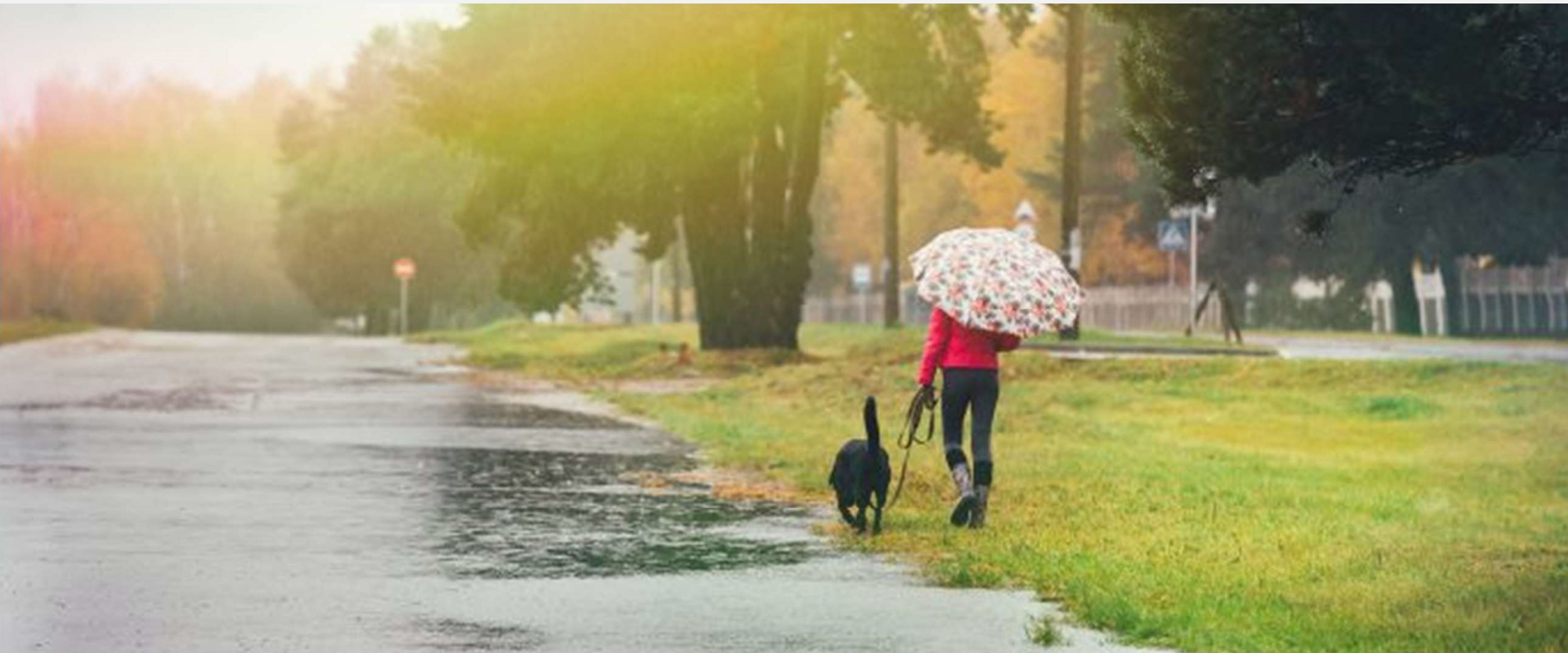
# The wheel of energy







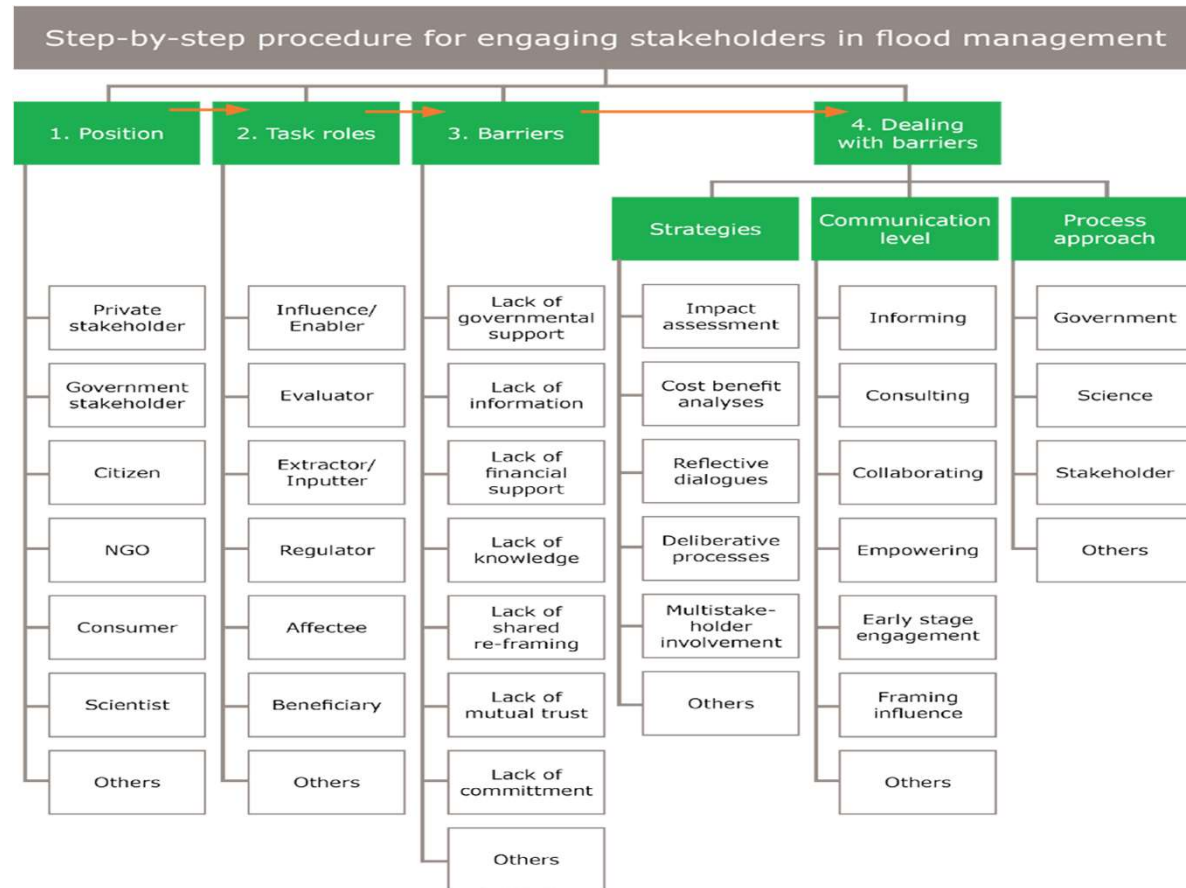
## URBAN GREEN-BLUE GRIDS - SPONGE TOOLBOX



Tools for the participation process



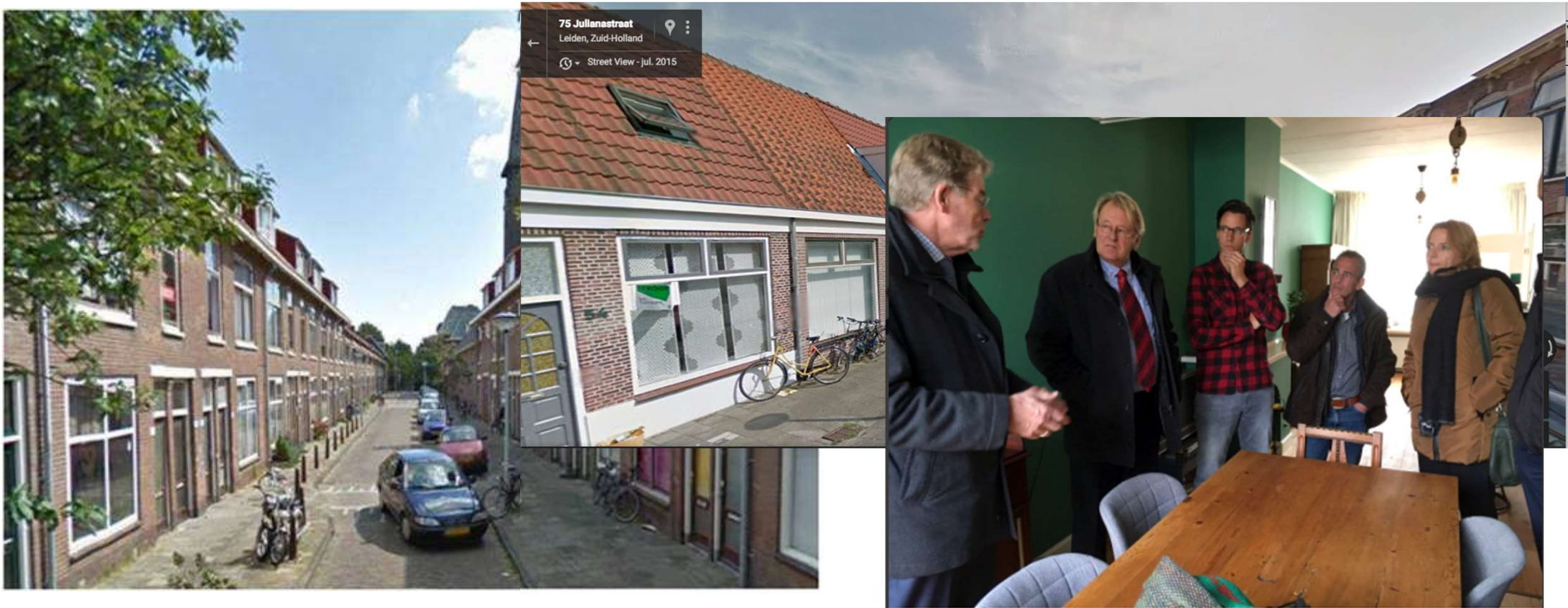
# URBAN GREEN-BLUE GRIDS - SPONGE TOOLBOX



Theoretical background

## URBAN GREEN-BLUE GRIDS - SPONGE TOOLBOX

Explanation of scheme with Case: noorderkwartier oost



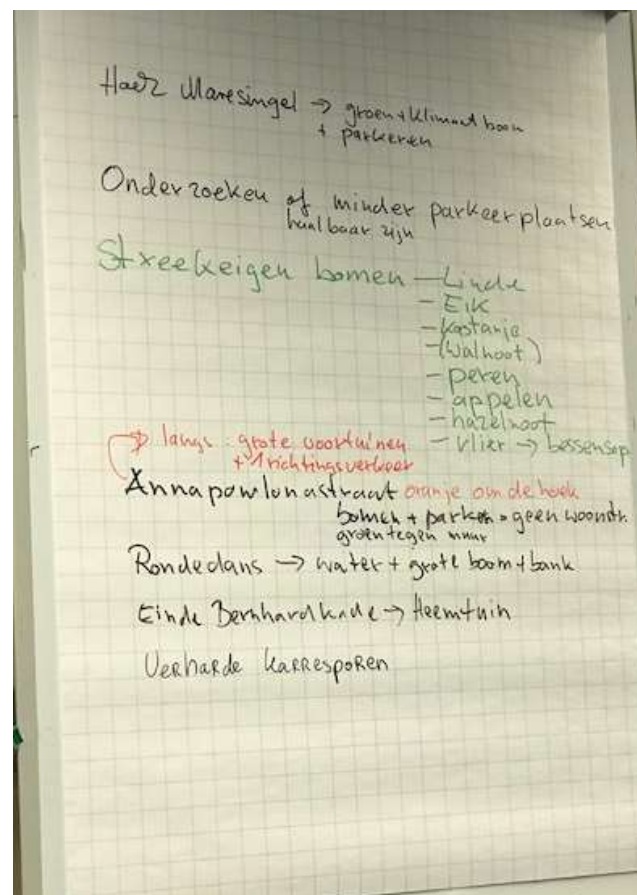
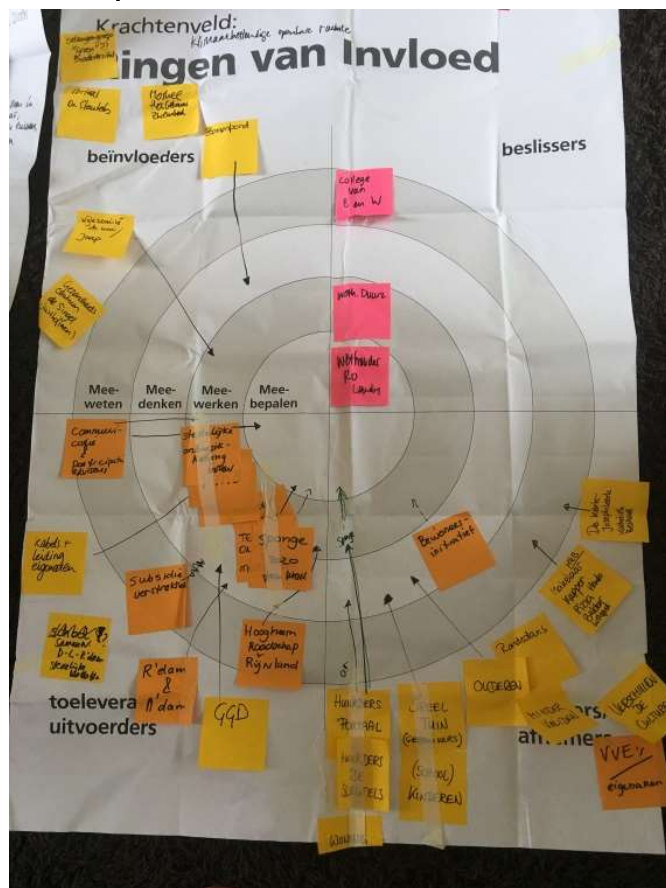
Step 1: scanning the situation



## 1. Position

# URBAN GREEN-BLUE GRIDS - SPONGE TOOLBOX

## Explanation of scheme with Case: noorderkwartier oost



## 2. Task roles

Influence/  
Enabler

Evaluator

Extractor/  
Inputter

Regulator

Affectee

Beneficiary

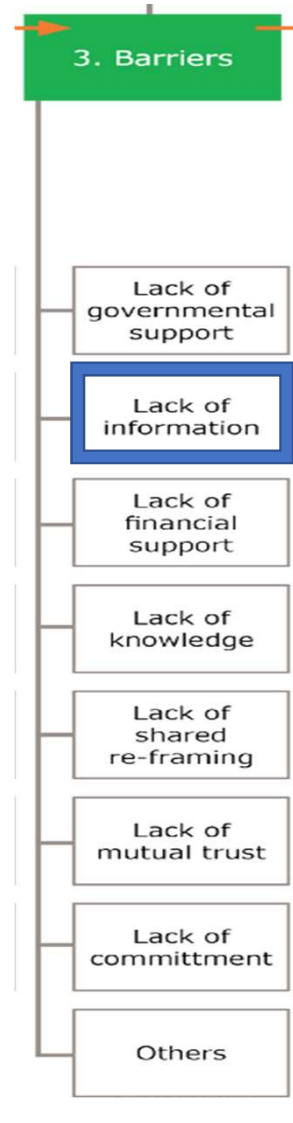
Others

## Step 1: scanning the situation

# URBAN GREEN-BLUE GRIDS - SPONGE TOOLBOX



<https://youtu.be/QudXVw6eW8w>



Informing the sounding board





## URBAN GREEN-BLUE GRIDS - SPONGE TOOLBOX



Working on trust

### 3. Barriers

Lack of governmental support

Lack of information

Lack of financial support

Lack of knowledge

Lack of shared re-framing

Lack of mutual trust

Lack of commitment

Others



## URBAN GREEN-BLUE GRIDS - SPONGE TOOLBOX



### 3. Barriers

Lack of governmental support

Lack of information

Lack of financial support

Lack of knowledge

Lack of shared re-framing

Lack of mutual trust

Lack of commitment

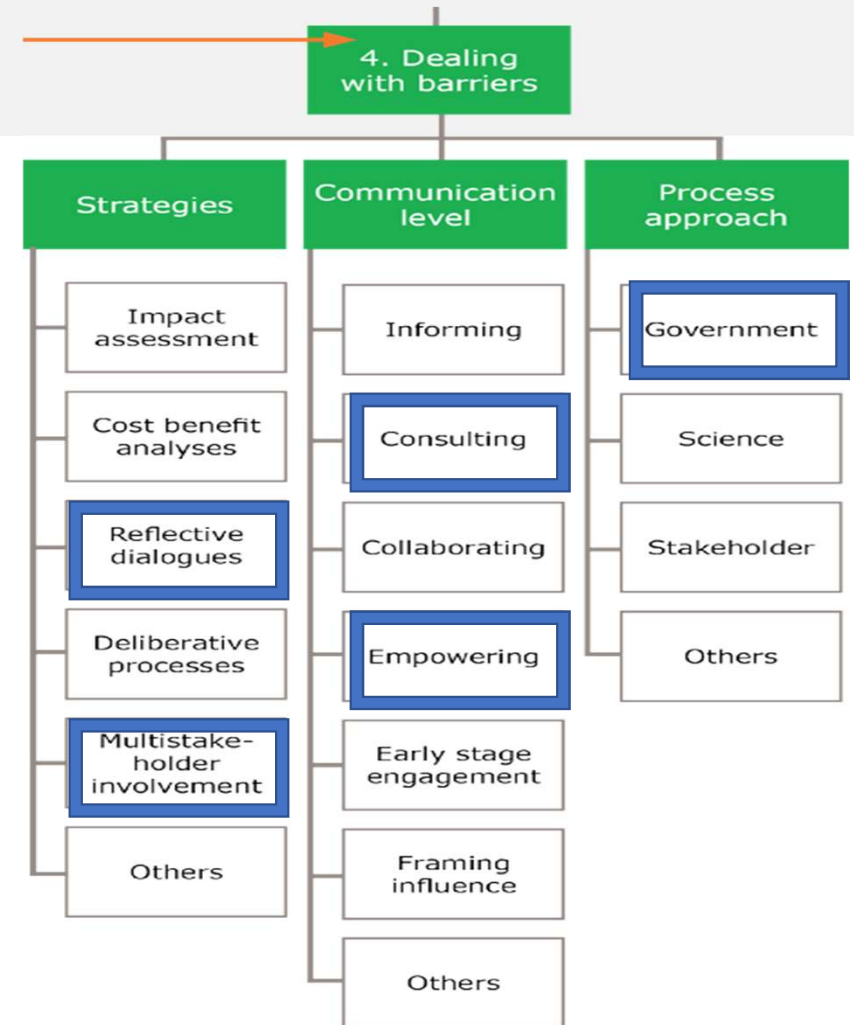
Others

Working to regain trust

## URBAN GREEN-BLUE GRIDS - SPONGE TOOLBOX



<https://youtu.be/Y-As3Zn6E8U>



Step 5: Empowering



# URBAN GREEN-BLUE GRIDS

for sustainable and resilient cities

atelier GROENBLAUW

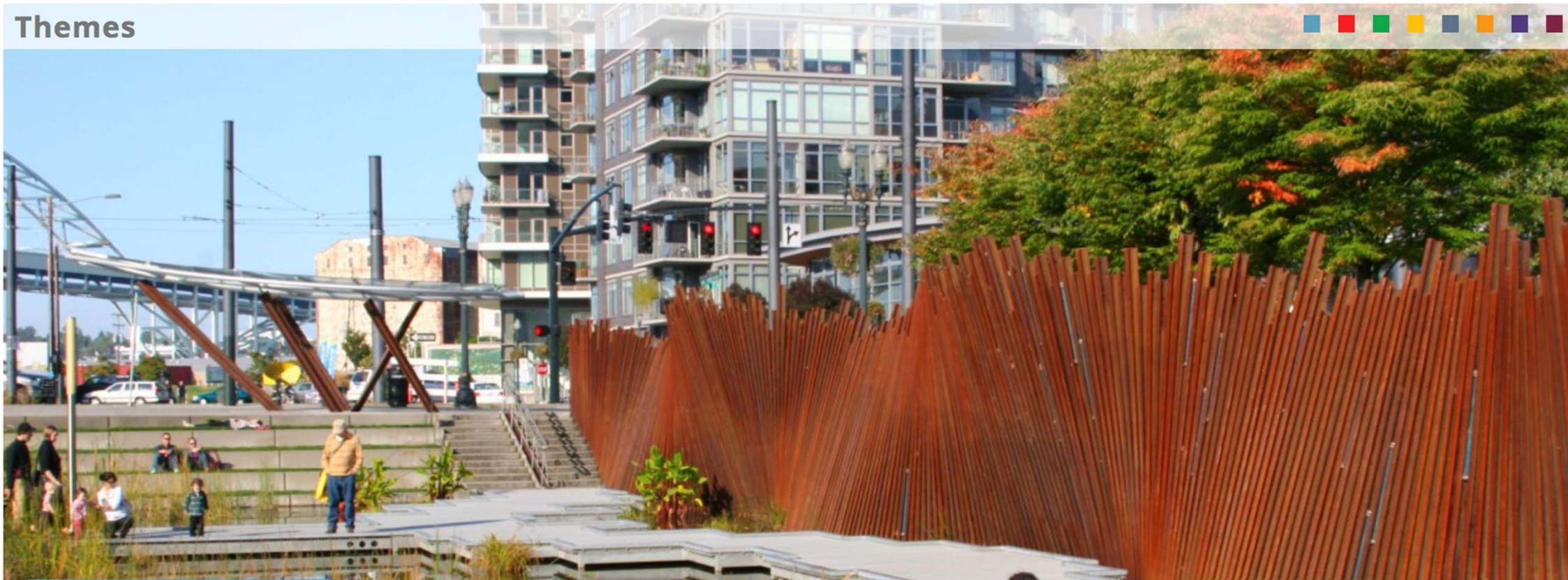
Search

Nederlands

Login

General information ▼ | Themes ▼ | Measures | Example projects | Design tool | SPONGE Toolbox ▼ | About

## Themes



Launch on website: [www.urbangreenbluegrids.com](http://www.urbangreenbluegrids.com)

Interreg   
2 Seas Mers Zeeën  
SPONGE 2020  
European Regional Development Fund

Heavier rainfall asks for readdressing